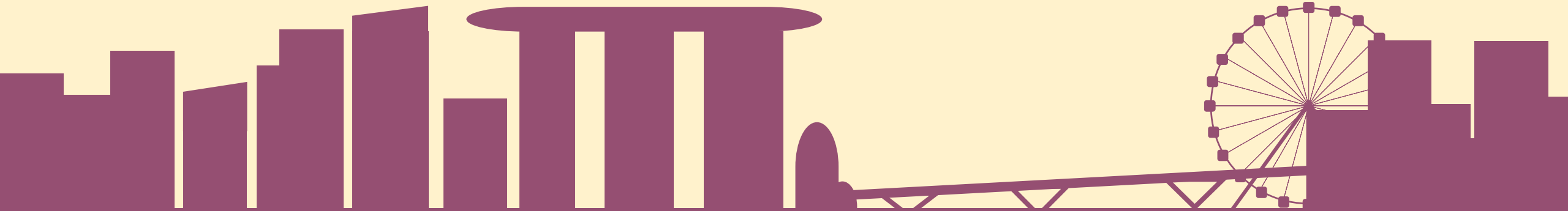




# Bong atadi

Kodrah Kristang 1A  
Lesson 3



femi ♀ ♂ machu

Andre sa familia

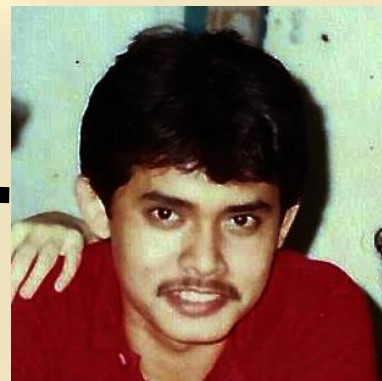




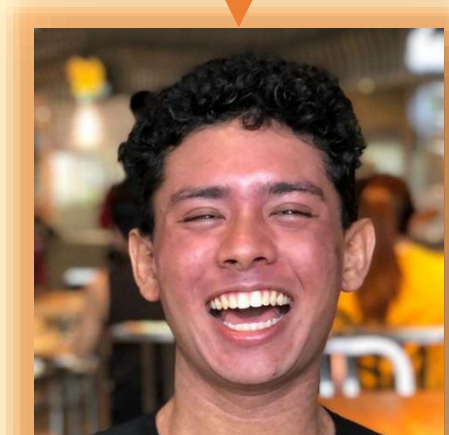
Mai



Pai



Mai-Pai



Yo



Irmang keninu

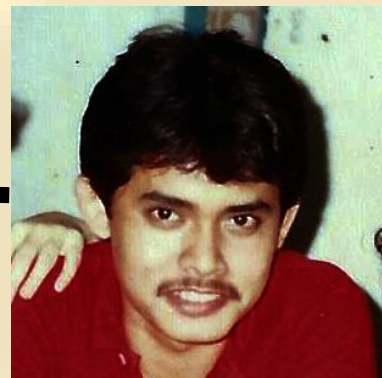


Irmang keninu

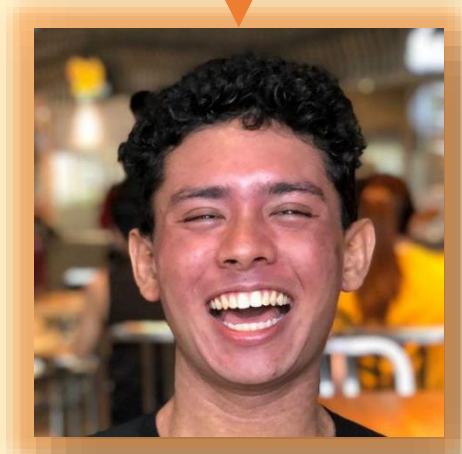
Mai



Pai



Mai-Pai



Yo



Irmang (machu)

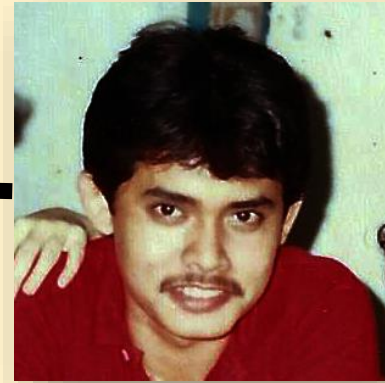


Irmang (femi)

Mai



Pai



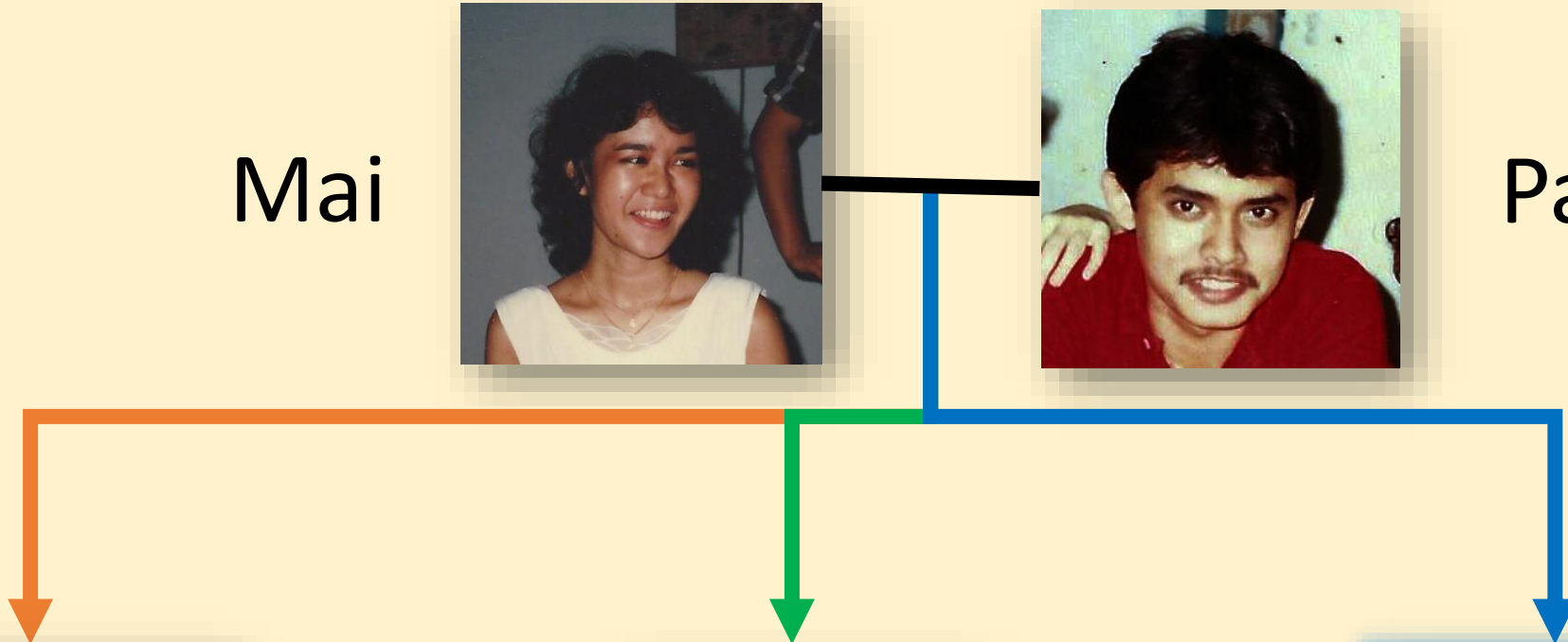
Irmang (machu)



Irmang (machu)



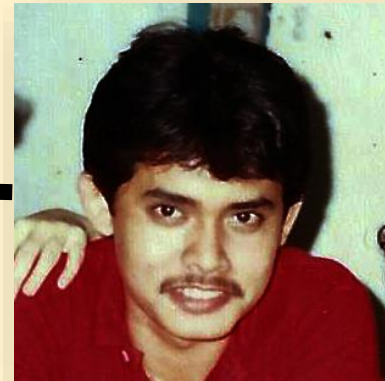
Yo



Mai



Pai



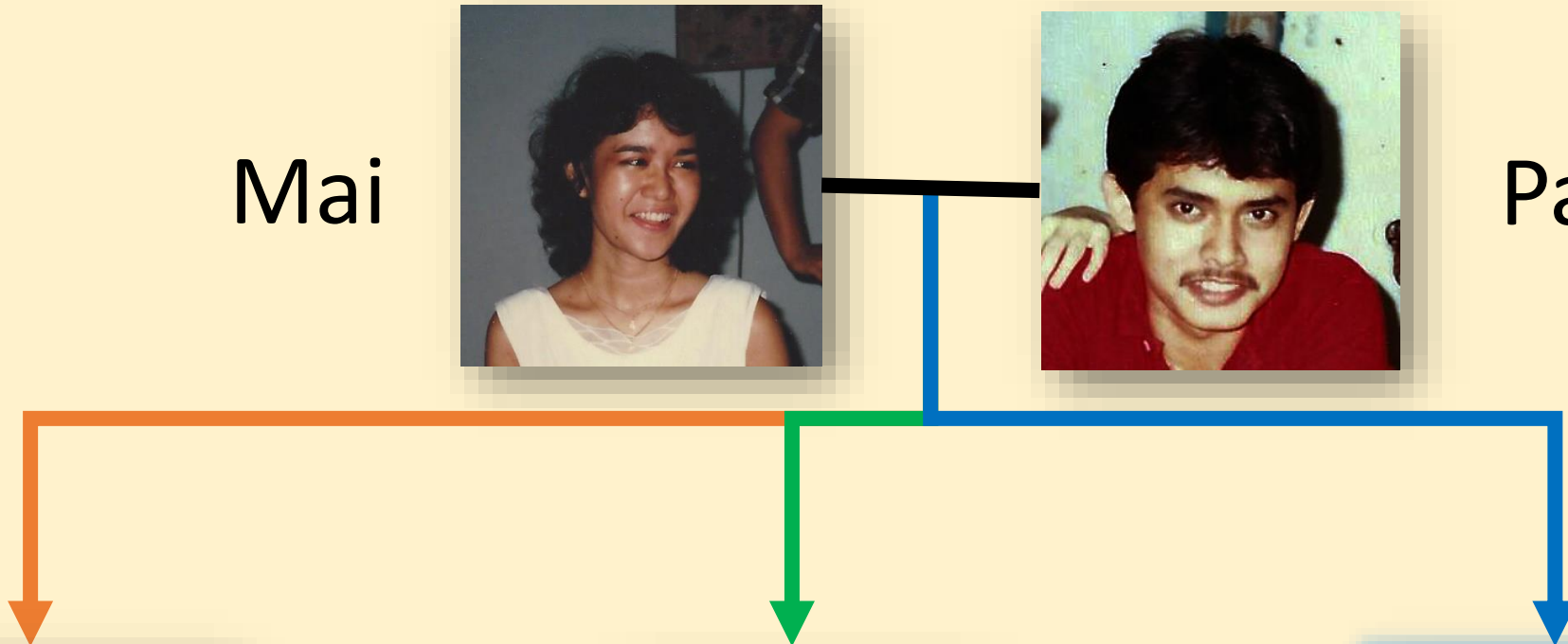
Kanyong



Irmang grandi



Yo

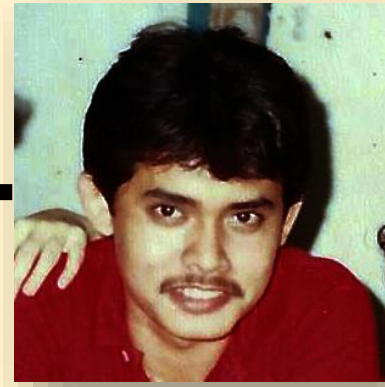




Mai



Pai



Irmang (machu)



Yo

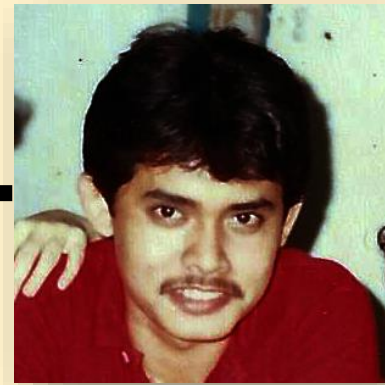


Irmang (femi)

Mai



Pai



Kanyong



Yo



Irmang keninu

Aboh  
(femi)



Aboh  
(machu)

Aboh-aboh



Tia Mai



Pai



Yo



Irmang

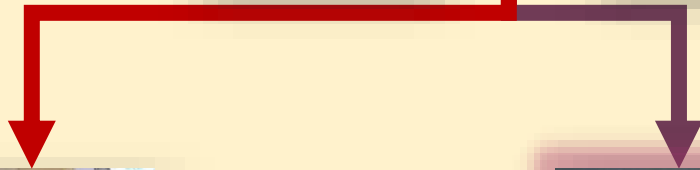


Irmang

Mai



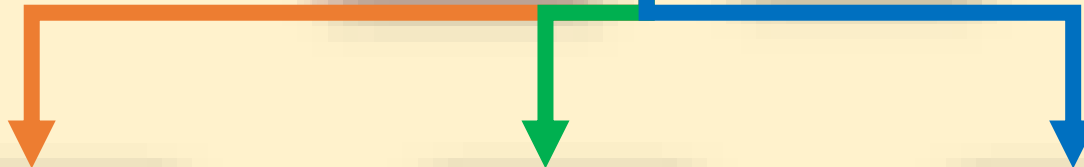
Pai



Irmang Yo



Maridu



Filu



Filu



Fila



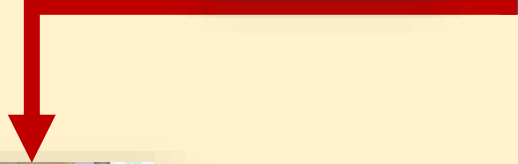
Muleh



Yo

x 1 = Krensa

x2, 3, etc. = Krengkrensa



Fila Fila



Jeru

Krengkrensa



Netu



Netu



Neta

Aboh

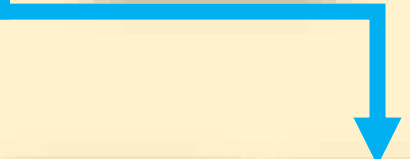
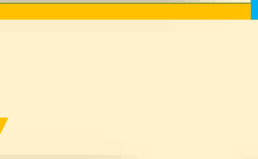
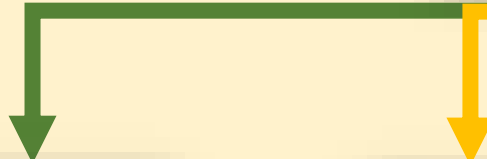
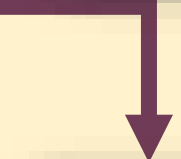
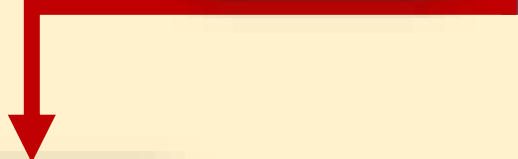


Aboh

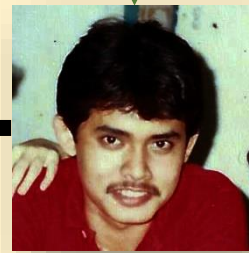
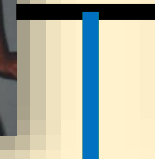
Aboh



Aboh



Tia Mai



Pai



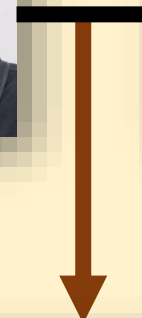
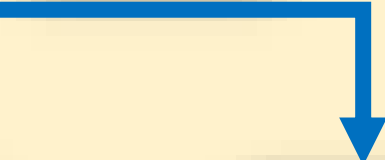
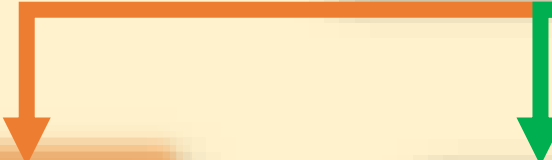
Tiu



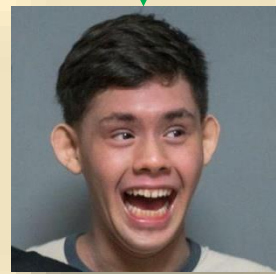
Tia



Tia



Yo



Irmang



Irmang



Prima

Sogra



Sogru

Mai



Pai



Muleh



Yo

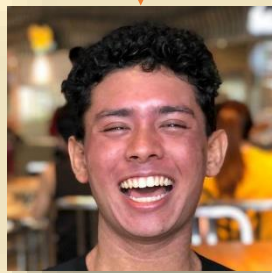


Kunyada

Irmang

Kunyada

Susi



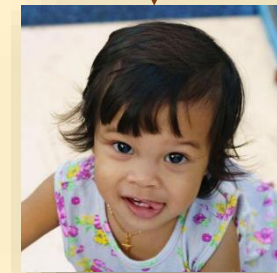
Filu



Filu

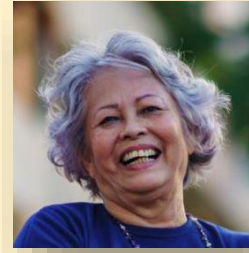


Fila



Sobrinya





Femi

Yo

Nora

Filu

Filu

Nora

Fila

Netu

Netu

Neta

Neta





Kantu

Bos teng kantu irmang?

# Yo teng dos irmang.



Eli sa nomi Zachary.

Eli 20. Eli studanti.

~~Eli papiah inggres~~

kung Cina.



Eli sa nomi Kathleen.

Eli 18. Eli studanti.

~~sa irmang.~~  
Eli pun papiah inggres.

# Activity time

1. Pick a partner and draw each other's family tree!
2. Of course, this means you need to ask them questions in KRISTANG.
3. The more questions you ask, the better you will be at the game later!

Bos teng irmang?  
Kantu irmang?  
Ki olotu sa nomi?  
Ki olotu sa sibrisu?

aboh	mai-pai
femi	neta
fila	netu
filu	nora
irmang	pai
jeru	sobrinya
kanyong	sobrinyu
krensa	sogra
krengkrensa	sogru
kunyada	susi
kunyadu	tia
machu	tiu

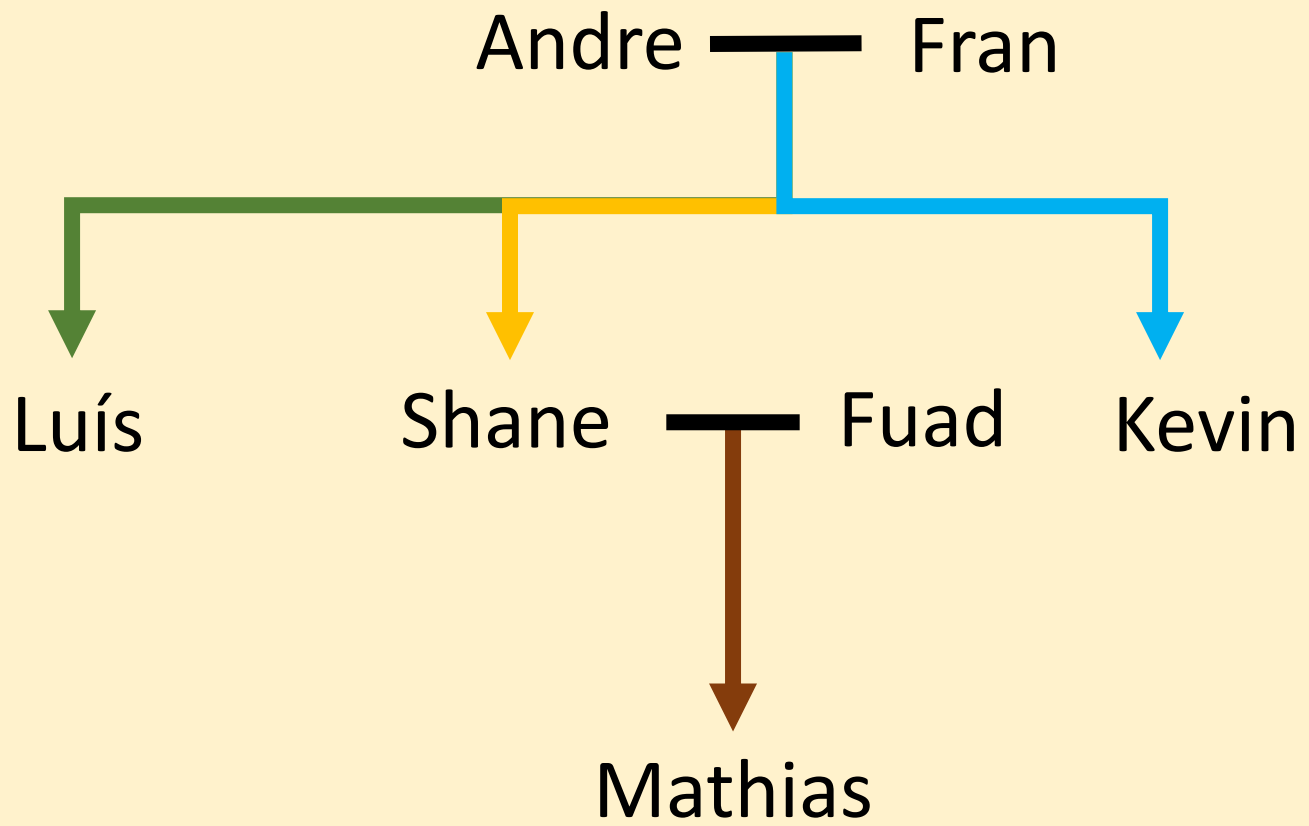


Nus bringkah!

**Nus fazeh ngua familia**

Fazeh dos grupu

Kada grupu fazeh ngua albi di familia



# Game time

1. Form two groups.
2. Each group is now a family, and you're going to make your own family tree! Decide who is who e.g. Kevin is Andre's dad, Fuad is Andre's brother, etc. **DON'T TELL THE OTHER TEAM.** (Max 3 gen)
3. The objective of the game is to be the first team to figure out the other team's family tree.

# Game time

4. Each round, someone from each team will ask someone else in the other team one yes/no question IN KRISTANG.
5. Begin with this structure:  
Yo pidih kung \_\_\_\_\_.
6. E.g. Andre wants to ask Kevin, so he says  
“Yo pidih kung Kevin. Kevin, Fuad sa pai Bernard?”

# Grup A



# Grup B





irmang femi	tiu	neta	sogra
irmang machu	tia	netu	sogru
irmang grandi	aboh femi	prima	kunyada
irmang keninu	aboh machu	primu	kunyadu
susi	krensa	sobrinya	madrastu
kanyong	krengkrensa	sobrinyu	padrastu
mai	fila	nora	intrada
pai	filu	jeru	intradu
	dizaboh femi		
	dizaboh machu		

Nus bringkah!

Yo pidih kung \_\_\_\_\_.

Bos teng \_\_\_\_\_?