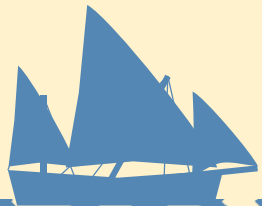


# TENG BONG

2A LISANG 8: SANTAH KUNG KARETA



Ozi nus prendeh **santah** kung **sorti-sorti di kareta**.  
Prumiru, mistih lumiah namba-namba.

Ozi nus prendeh **santah** kung **sorti-sorti di kareta.**

Na lisang pasadu, nus preندهh **klai**.

Izemplu di preguntu kung klai:

Klai falah isti palabra?

Klai soletrah isti palabra?

Klai eli ta kantah isti kantiga?

Klai eli ta fازه isti sibrisu?

Ozi nus teng preguntu nubu kung **klai:**  
**Klai bos bai skola?**

*lebah kareta* = **to drive a car**

**Klai bos bai skola?**

Yo <sup>!</sup>lebah kareta bai skola.

Yo **santah bus** bai skola.

**santah** teng 2 signifiku:

Signifiku di **santah** na Inggris #1: *to sit*

Bos impodih santah bong-bong, mistih impeh!



OSULINGGU MISTIDU



**santah**

*santah* = (2) **to go by (transport)**

Klai bos sa aboh femi bai bazar?

**Eli santah bus bai bazar.**

OSULINGGU MISTIDU



**santah**

*santah* = (2) **to go by (transport)**

Klai bos sa tia bai Batam?

**Eli santah barku bai Batam.**

Agora nus prendeh **sorti-sorti di kareta.**

Yo bibeh na Seletar.



Yo santah **kareta** bai greza San Binsenti di Pablu.

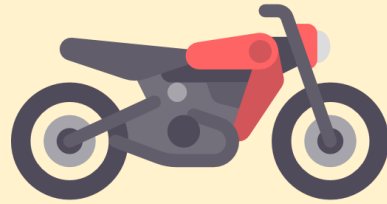


Yo santah **baisikal** bai parku.



Yo santah  **kosikal** bai parku.

*kosikal* = **scooter**



Yo santah <sup>★</sup>moto(sikal) bai Sengkang.

*moto / motosikal* = **motorcycle**





Yo santah **bus** 70 bai Yio Chu Kang.



Yo santah <sup>★</sup>**tekski** bai Ospital Tan Tock Seng.

*tekski* = **taxi**



Yo santah <sup>☀</sup>kamiung bai merkansia.

*kamiung* = **lorry**



Yo santah buseta bai butika.

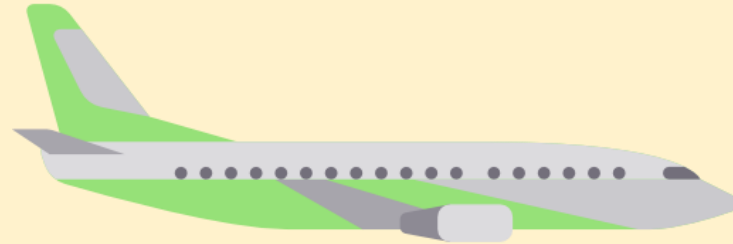
*buseta* = **van, minibus**



Yo santah **kareta fogu** bai Yishun.



Yo santah **barku** bai Bintan.



Yo santah <sup>★</sup>barku buah bai <sup>★</sup>kostiah mundu.

*barku buah* = **aeroplane**

*kostiah* = **to travel**



Na San Fransisku, yo santah <sup>☀</sup>trang bai olah sidadi.

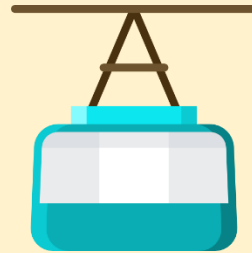
*trang* = **tram**





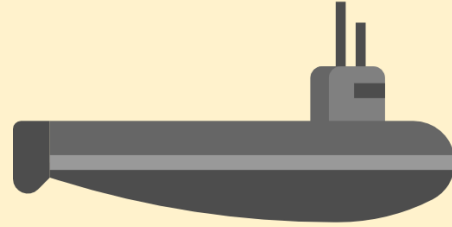
Yo santah <sup>☀</sup>barku pairah bai Pulau Tekong.

*barku pairah* = **helicopter**



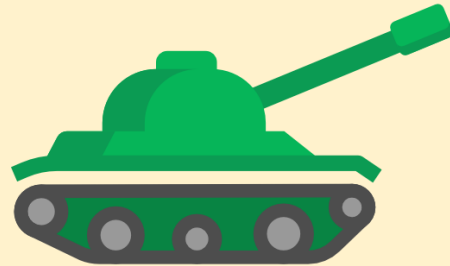
Yo santah <sup>!</sup>karetu dabi bai Sentosa.

*karetu dabi* = **cable car**



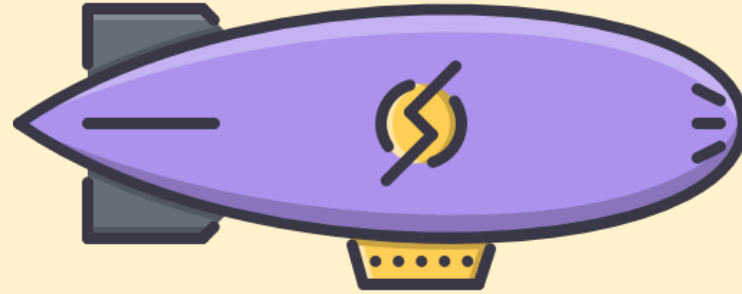
Yo santah  barku mergulah bai olah Selat Johor.

*barku mergulah* = **submarine**



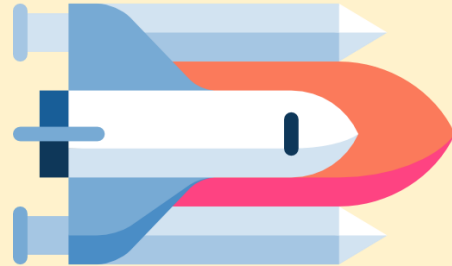
Yo santah  kareta brigah bai gera.

*kareta brigah* = **tank**



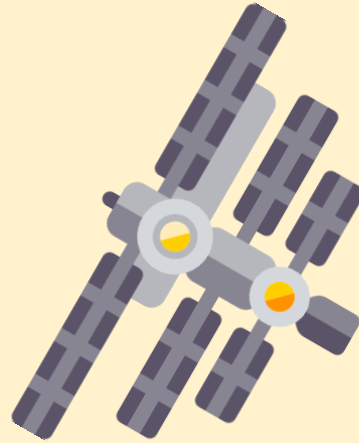
Yo santah zepeling bai olah tudu Singapura.

*zepeling* = **blimp**



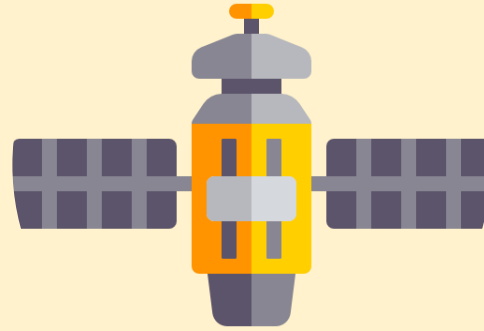
Yo santah  barku spasu bai lunga.

*barku spasu* = **spaceship**



Yo santah na  barastra olah tudu mundu.

*barastra* = **space station**



Nus sibrih  teleti chomah kung jenti na otru tera.

*teleti* = **satellite**



Na tempu pasadu, jenti santah **kabalu**.



Yo <sup>★</sup>andah peu bai yo sa <sup>★</sup>viziansa sa kaza.

*andah peu* = **go by foot**


*viziansa* = **neighbor**



Yo **kureh** bai yo sa tia sa kaza.

Kiora jenti kereh santah bus, mistih komprah  pasazi.

*pasazi* = **ticket**

Jenti **santah** kareta sa nomi **santador/a**.  
Jenti **lebah** kareta sa nomi  **karetador/a**.

*karetador/a* = **driver**

# BRINGKÖ 1



KAMINYÖ DI STRELA

# REGLASANG

1. Fازه grupu (max 4 jenti).
2. Tudu grupu logu achah
  1. 1 fola A3 di sidadi di Lontrapura
  2. 2 dadu teng 10 banda
    1. 1 dadu teng namba 1-10
    2. 1 dadu teng namba 10-100

# REGLASANG

3. 3 katra pakau na 1 Ziploc:
  1. 1 kp jambu: Katra Busetta
  2. 1 kp bedri: Katra Kosikal
  3. 1 kp laranja
4. 4 tanga di klor difrenti.
3. Champurah katra pakau jambu kung bedri.
4. Skuleh 1 tanga pra bos sa par, botah eli na Ottersgate na fola A3.



# REGLASANG

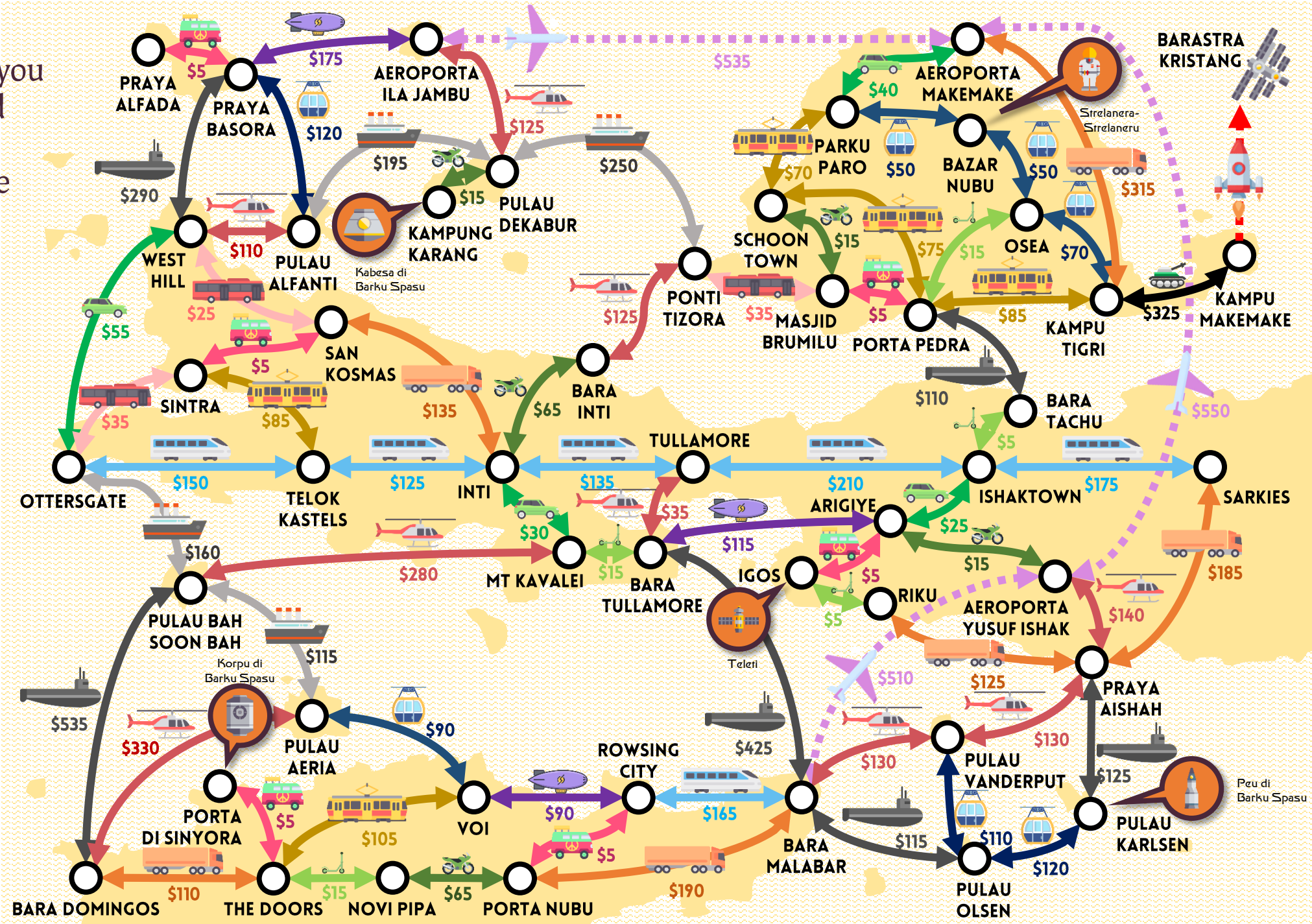
You are a freelance Eurasian pilot living in the city of Lontrapura.

The Prime Minister of Lontrapura has just announced a new competition: to be the first person from Lontrapura to build and launch a rocket that will take you to the Kristang Space Station (KSS).

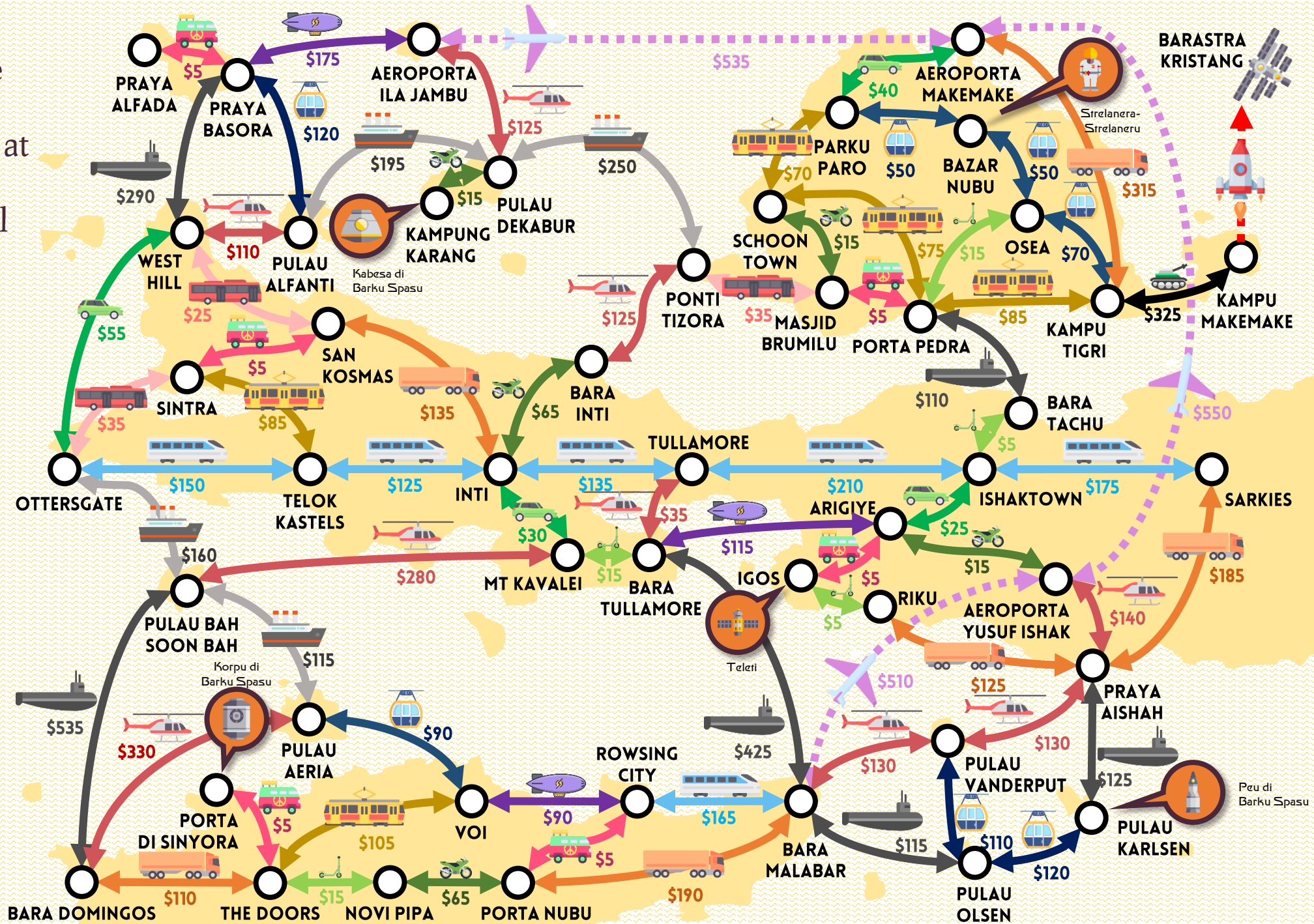
To build your rocket, you will need to go around the map collecting 5 rocket parts.

To build your rocket, you will need to go around the map collecting 5 rocket parts. These are the items in orange.

-  Kabesa di Barku Spasu
-  Korpu di Barku Spasu
-  Peu di Barku Spasu
-  Strelanera-Strelaneru
-  Telati

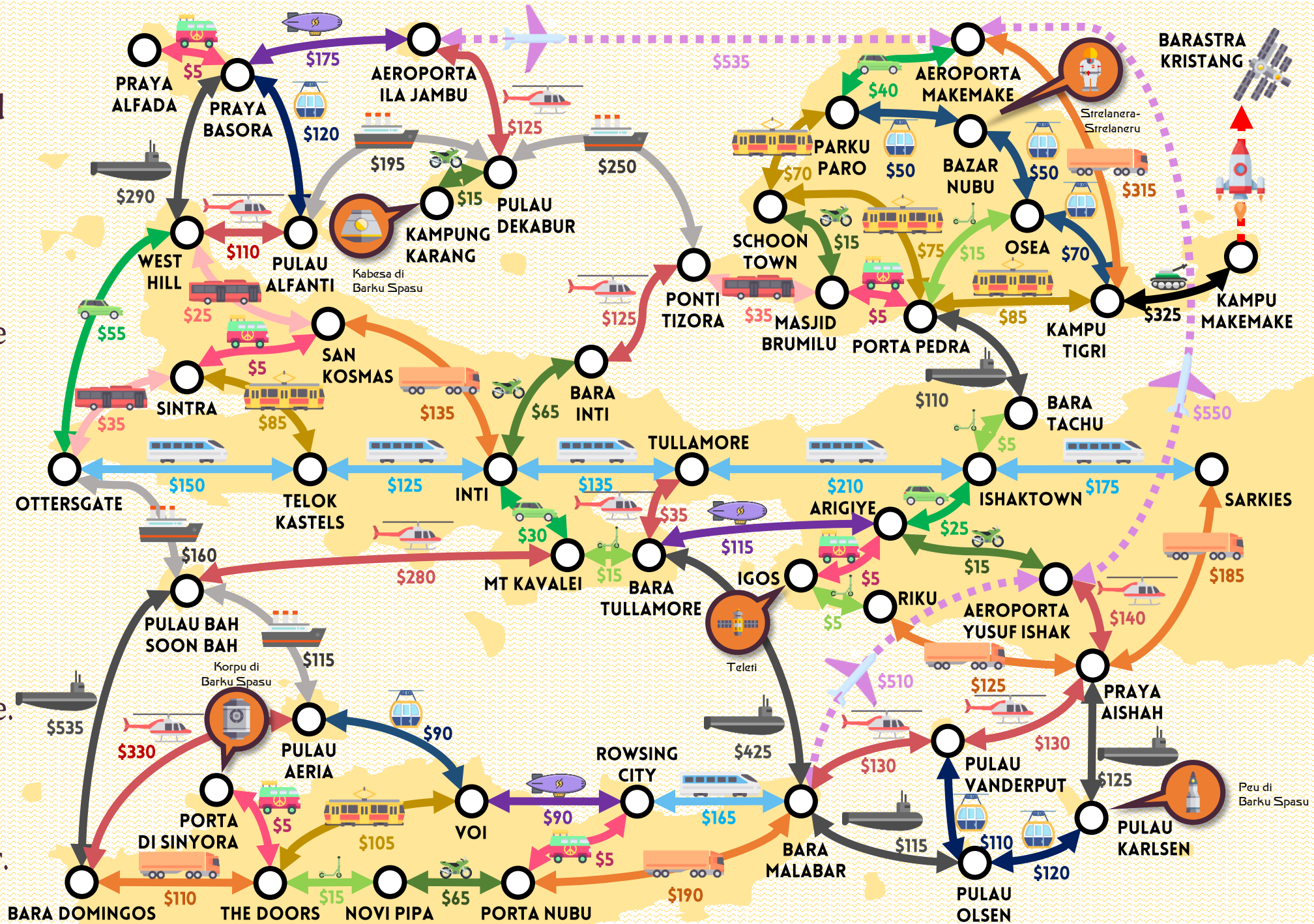


To win, after you have collected the 5 rocket parts, finish your turn at Kampu Makemake, where your rocket will launch for the Space Station!



On your turn:

1. Roll both dice and add the numbers together. This is your income for your turn. Keep track of your total money on the piece of rough paper.
2. Move to a new city connected to the city you are currently at. To move between cities, you need to pay for the ticket price stated under each transport type. Deduct this price on your piece of rough paper. Extra money carries over.



When you move, say:

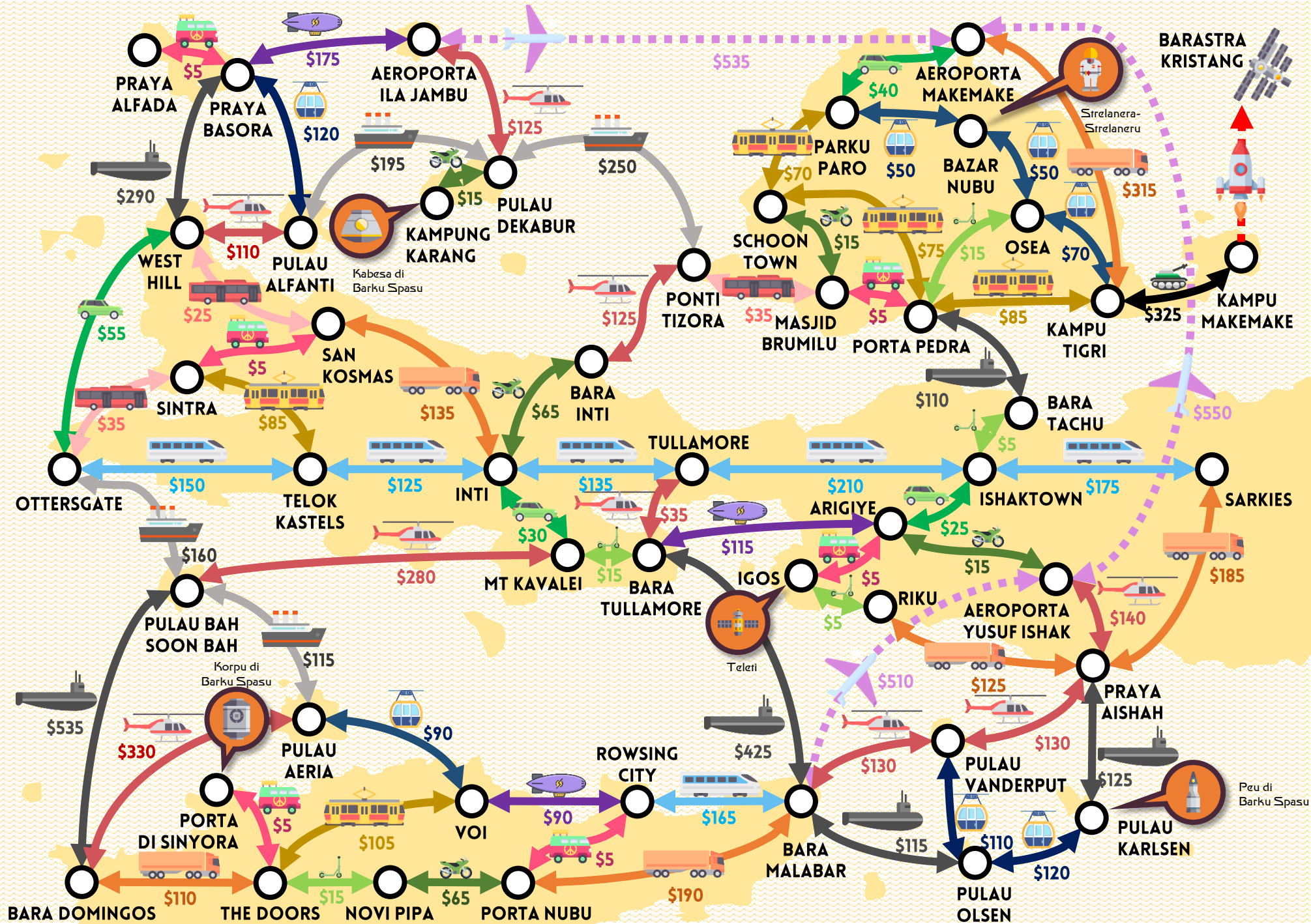
“Nus santah X bai Y.”

where X = vehicle  
Y = new city

You **MUST** move  
unless you cannot  
afford any of the  
transport options.

You can only move to  
one city per turn.

3. Once you arrive at  
a city with a rocket  
ship part, just take  
the part from the  
orange card pile.



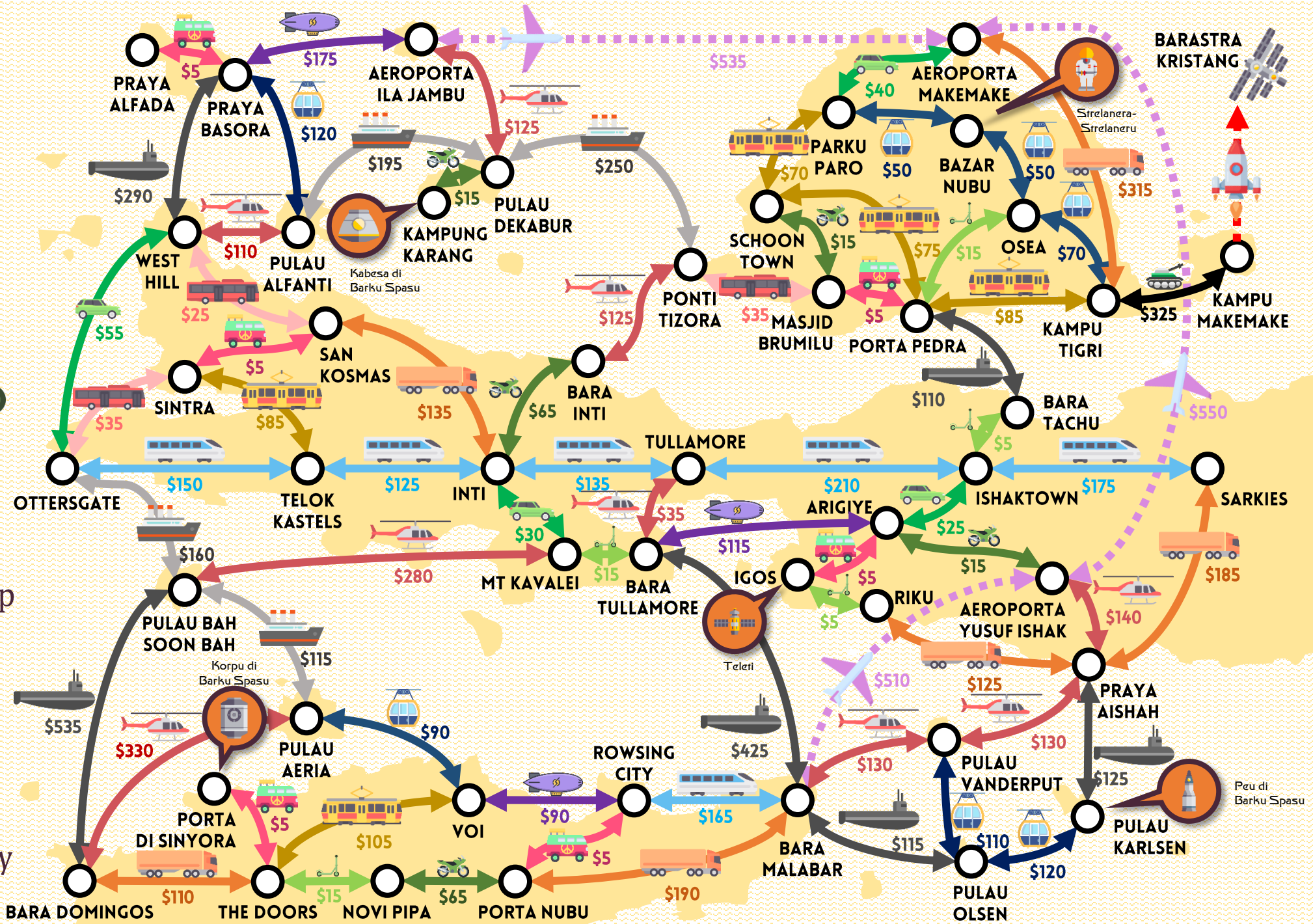
4. If you travel by buseta or kosikal, you must draw a katra buseta card or a katra kosikal card respectively.



Do whatever the card says as soon as possible.

e.g. if the card says skip a turn you skip a turn immediately

e.g. if the card says your next plane journey is free, your very next plane journey is free



**To win:** Collect the 5 rocket parts and finish your turn at Kampu Makemake, where your rocket will launch!

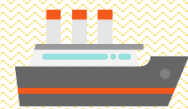
On your turn:

1. **Roll both dice and add the numbers together.** This is your income for your turn. Keep track of your total money on the piece of rough paper.
2. **Move to a new city connected to the city you are currently at.** To move between cities, you need to pay for the ticket price stated under each transport type. Deduct this price on your piece of rough paper. Extra money carries over. When you move, say:

“Nus santah X bai Y.”

where X = vehicle

Y = new city



barku



barku pairah



kamiung



bus



trang



kareta



moto(sikal)



kareta fogu



kareta dabi



barku abuah



zepeling



barku mergulah



kareta brigah

Draw a card if moving by



busesta



kosikal

You **MUST** move unless you cannot afford any of the transport options. You can only move to one city per turn.

3. Once you arrive at a city with a rocket ship part, just take the part from the orange card pile.
4. If you travel by busesta or kosikal, you must draw a katra busesta card or a katra kosikal card respectively. Do whatever the card says as soon as possible e.g. if the card says skip a turn you skip a turn immediately; e.g. if the card says your next plane journey is free, your very next plane journey is free



OSULINGGU MISTIDU

Santah



2A LISANG 8



PALABRA NUBU



andah peu  
barastra^  
barku abuah  
barku mergulah^  
barku pairah^  
barku spasu^  
buseta^

kamiung^  
karetador/a^  
kareta brigah^  
kosikal^  
moto(sikal)  
santador/a^  
santah

tanga^  
teksi  
teleti^  
trang^  
viziansa  
zepeling^