



Kodrah
KRISTANG

★ *Eresberes* ★
ELECTIVES

E1

Buskah familia
FAMILY FINDER

Lisang 5

Mistidu!

**Trizeh bos sa
fuzimera pra
lisang prosimu**



Palabra

Na



, nus ja preندهh...

neta

netu



Palabra

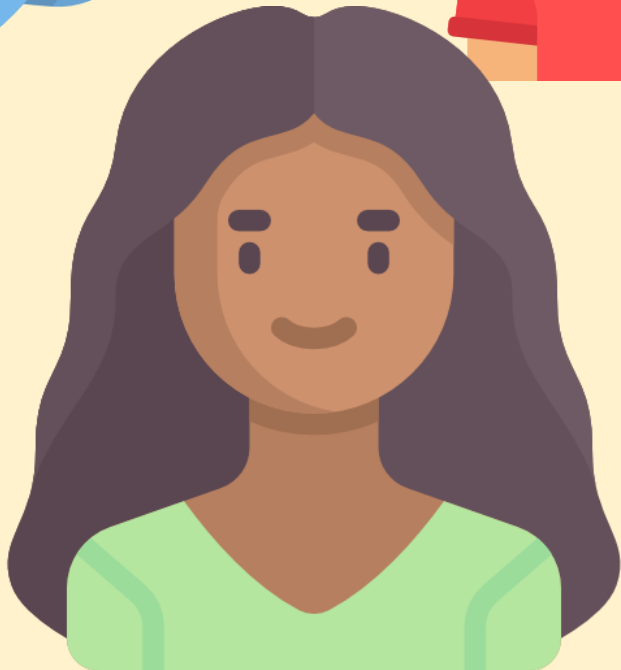
jirisang

relative

Eli bos sa jirisang?

Is he your relative?

Palabra



krensa di leti

baby

dizanti ^

teenager

adultu

adult

Bringku Keng eli? Parti I

1. Each round, mestri will flash question asking students to identify one of the 36 people around the room by a trait or characteristic on screen e.g. Kal jirisang teng kabelu krinting?
2. The first pair to raise their hand and give a complete sentence describing the trait or characteristic gets one point.
3. The pair with the most number of points wins Part I.

Bringku Keng eli? Parti II

1. Lay out all 36 cards in a 6x6 grid face up in front of you.
2. Secretly choose one of your 36 cards. This is the person your partner has to guess.
3. Now take turns to ask each other yes/no questions toward guessing your partner's secret person.
4. The first person to guess their partner's secret person wins!



Module project

produce a poster and a 150-word writeup in Kristang featuring or profiling one of the following (**CHOOSE ONLY ONE**):

- i. your family tree
- ii. a member of your family
- iii. the family tree of a prominent individual in Singapore
- iv. a prominent individual in Singapore

The poster and writeup are to be presented during Lisang 10.



Module project

- You may work as individuals or pairs for the project; members of pairs will receive the same grade.
- The content you choose to present should be selected based on the research you do during the module.
- The poster can be mounted on A4 or A3-sized paper, foam cutout, cardboard, corkboard or any other material.
- The 150 words can either be part of the poster itself, or can accompany the poster on a separate handout.

Mistidu!

**Trizeh bos sa
fuzimera pra
lisang prosimu**

Palabra

Na



, nus ja preنده...

peskisador

peskisadora

Peskisa

Preguntu pra skuleh jenti pra peskisa

1. Agora, ki yo sabeh di isti jenti?
2. Ki yo ngka sabeh?
3. Ki yo kereh sabeh?
4. Undi yo logu bai buskah stiru di isti jenti sa bida?

Bringku Peskisa di familia

1. Fill up the front side of handout on your own; the handout invites you to select three people from their own family or three prominent people you might want to investigate for this project.
2. After 15 min, mestri will invite you to mingle for 15 min. During this phase, if you already have a person you would like to collaborate with in mind, go to that person and discuss your ideas. Otherwise, talk to the person next to you and discuss your 3 people.
3. After 15 min, mestri will invite you to fill up the handout with the details of who you want to focus on. Mestri and judanti will walk around and speak to each individual or pair.